

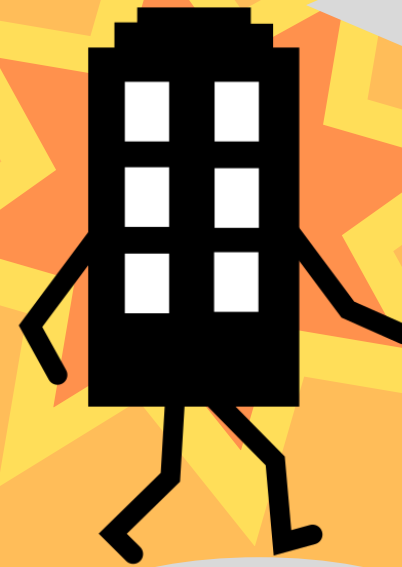
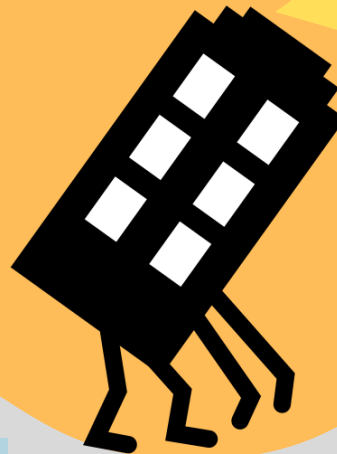
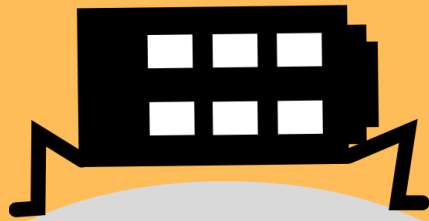
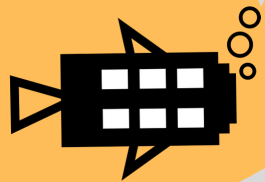
# The Evolution of Building Energy Benchmarking

Small & medium size properties were ignored in benchmarking programs. Crude monthly analyses were unable to disaggregate energy use and omitted customized conservation recommendations.

Now, benchmarking is evolving faster than ever before. Res-Intel can evaluate thousands of single family and multifamily homes for pennies per property.

Regulated property owners & managers spent \$500-\$1100 in labor costs per property, plus hundreds more for each annual update.

In the beginning, benchmarking was difficult and data was hard to come by.



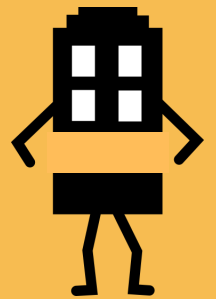
Res-Intel offers the next step in building energy benchmarking with the **Benchmark.AI** software tool.

## Benchmark.AI features:

- First-ever residential property and building inventories.
- Identifies naturally-occurring affordable housing.
- Hyper-customized conservation recommendations for each property.

Organic affordable housing is known as the "Missing Middle" and creates opportunities for:

- Programs designed to reduce household energy burdens.
- Geotargeting high energy users for building electrification.
- Mitigating climate change and improving indoor air quality.



Evolve your benchmarking.  
[www.Res-Intel.com](http://www.Res-Intel.com)



**RES-INTEL**  
Residential Energy & Water Intelligence